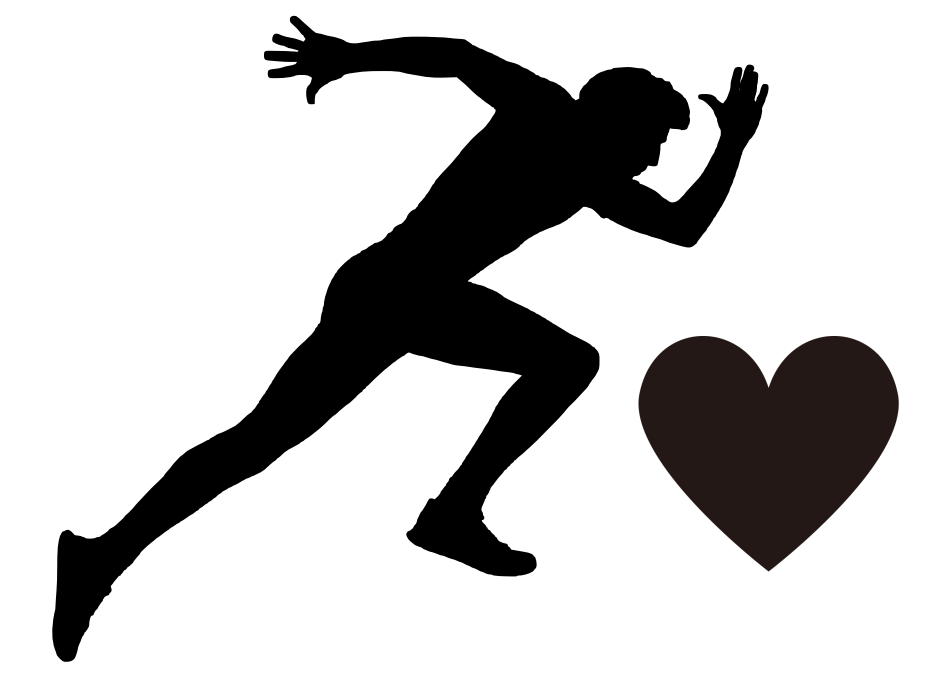




≡ Musical Elements ≡

Tempo

Speed
(find the pulse)



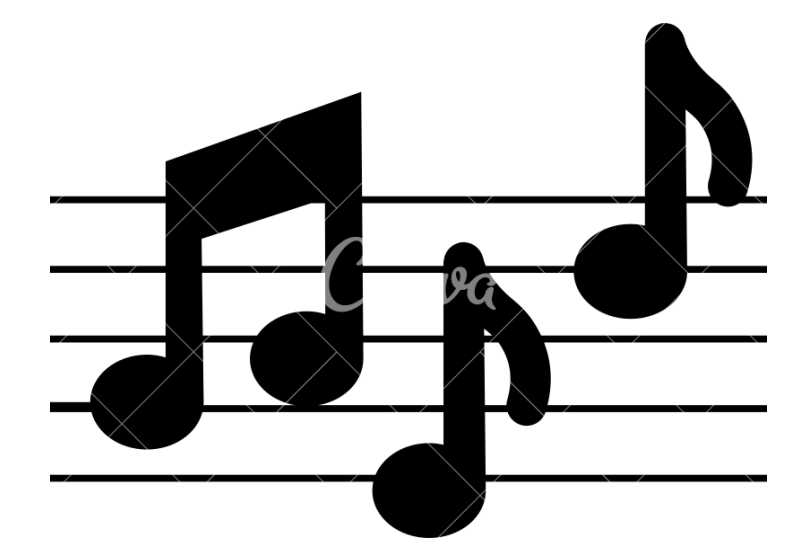
Texture

Music Layers
(count the players)



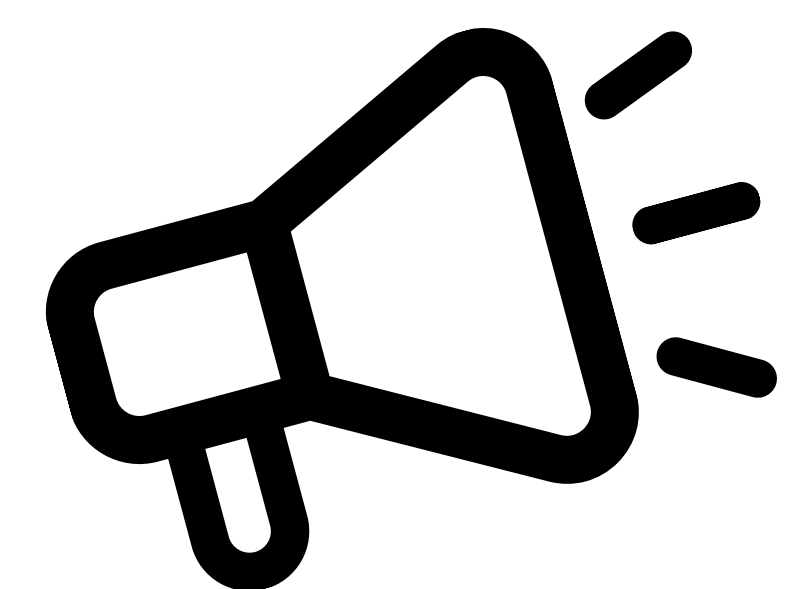
Pitch

High and Low notes
(Tune = Melody)



Dynamics

Volume - loud & quiet
(Including silence!)



Structure

Order of sections
(verse, chorus, A, B)



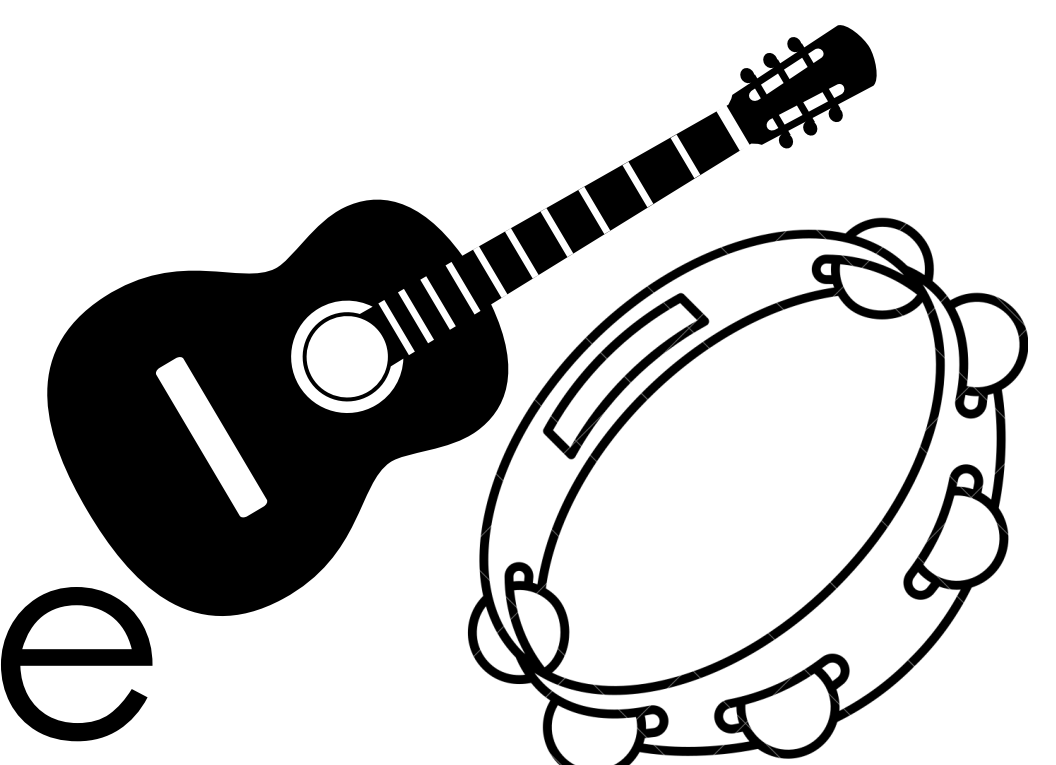
Rhythm

Patterns of durations
(long, short, rest)



Timbre

Sounds that
instruments make



Tonality

Overall sound
Happy (major) Sad (minor)

